



K 24 K 32

INDUSTRIAL HIGH-SPEED
CONVEYING-BELT
DIRECT-TO-TEXTILE
DIGITAL PRINTER



START WITH US, GROW WITH US

Outstanding printing
speed and precision,
excellent reliability
and stability



PRODUCTION



Outstanding printing speed and precision, excellent reliability and stability



Advanced industrial design, high-efficiency data processing technology



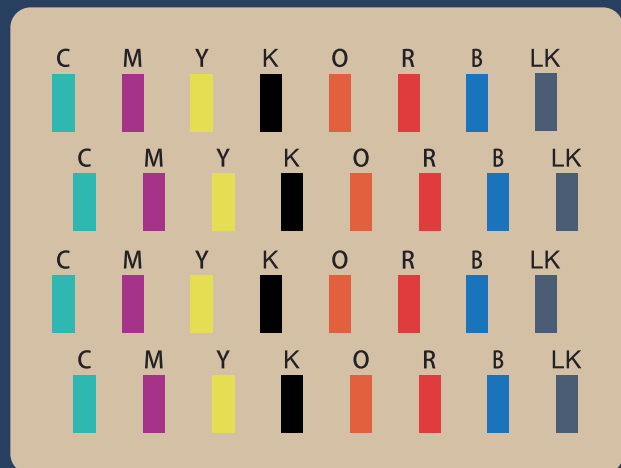
A cost-effective machine brings customers more profit and return

PRINT HEAD POSITION

K 24



K 32



Inkjet Solution

6 or 8 colors inkjet solutions improve accuracy of ink drop locations and break the boundary of color composition.

Let printing become the finishing touch of textiles

CERTIFIED ORIGINAL INK

The FabPro ink with Intertek certification delivers pure color and smooth output.



Intertek

K 24

K 24



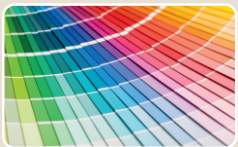
Unique Symmetrical Ink Supply Scheme

Unique symmetrical ink-supply solution to reduce inkjet color difference and improve color consistency. Gray-scale variable ink-drop inkjet technology applied to print a vivid pattern effect.



Auto Ripping

FabPro II provides the internal storage system that stores the design in the system to print the design in just single click with click and print feature. This feature saves the time on ripping the design everytime.



High-quality Printing Solutions To Reproduce Color Authenticity

With high-quality industrial piezoelectric ceramic printheads, the print pattern offers higher clarity, brightness and color saturation.



De-wrinkle system (Best in Class)

First in class de-wrinkle system to remove unwanted wrinkles from the fabric.



Moving Roll (First in Class)

The specialized conveyor belt has a smaller tension force. Together with a large-diameter roll it improves the accuracy and stability of conveying process.



The Device Runs More Stably and Smoothly

Carriages drive uses linear motor and high-strength steel rail beams, so the whole machine operates more stably, to ensure a stable printing effect.

General air pressure, negative pressure real-time monitoring and adjustment system to ensure the operation of equipment more stably and smoothly.

SPECIFICATIONS

Model • K 24

• Printing Parameters

Print resolution Single Channel (24Heads)	• 508 x 1200 dpi (2 pass)	• 600 x 1200 dpi (3 pass)	
Printing speed (24Heads)	• Upto 280 Lm/hr	• Upto 250 Lm/hr	
Print resolution Single Channel (16Heads)	• 600x600dpi (1 pass)	• 508x1200dpi (2 pass)	• 600x1200dpi (2 pass)
Printing speed (16Heads)	• Upto 300 Lm/hr	• Upto 185 Lm/hr	• Upto 170 Lm/hr
Color	• C、M、Y、K、O、R、B、LK		
Printing mode	• Single/bi-direction		
Printhead Qty	• (Single Channel) 8~16~24		
Colors	• CMYK + 2 or 4 spot colors		
Inks	• Reactive, Acid, Disperse		
Ink tank capacity	• 15L		

• Media | Take-up | Drying

Media type	• Cotton, linen, silk, nylon, polyester, blended		
Media conveying	• Continuous belt conveying, dedicated unw		
Max. printing width	• 1900 mm		
Max. media width	• 1920 mm		
Applicable media GSM	• 30- 450 g/ m ²		
Max. roll diameter	• Standard roll: φ500mm A-type feeding u		
Drying mode	• Belt + dryer heated by IR (steam-type, elect)	Drying mode (16Heads)	• 8-Belt + IR Heater
Exhaust treatment	• Compulsory ventilation		

• Electricity, Air and Water

Printer voltage	• AC220V~240V±10% single phase Printer: 25A (5.2 KW)		
Guide belt heating	• 34A (7.4 KW) single phase		
Dryer voltage	• AC380V±10%, three phase 25A (15.9 KW)	Dryer voltage (16Heads)	• 440V, 3 Phase, 13KW
Compressed air supply	• 0.6 Mpa 3.5 m ³ /hr (dry, no oil or water)		

• Environmental Requirement

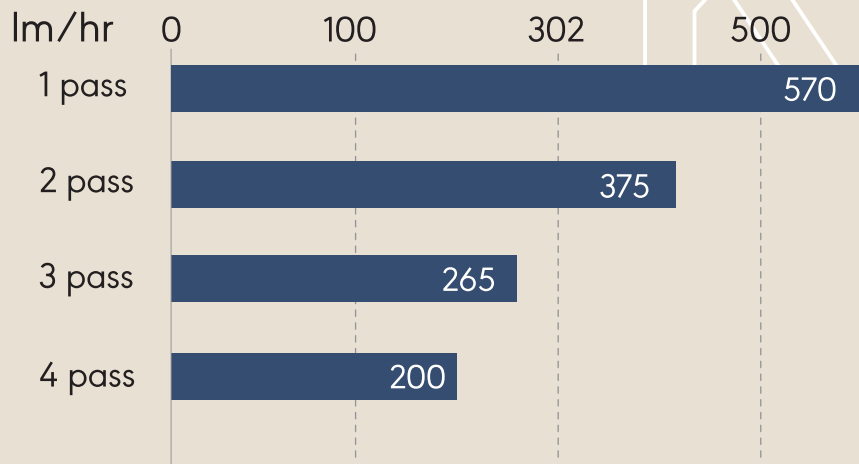
Temperature	• 20~26°C (68~76°F)		
Humidity	• 55-65%		
Installation Dimension			
Dimension (L/W/H)	• Printer: 15.27 x 7.54 x 7.47 Feet • Dryer: 7.18 x 9.35 x 4.59 Feet		
Installation space dimension	• 38.38ft x 23.13ft (L x W) (it is not the standard requirement for installation of the mach can have appropriate adjustment as per local space conditions.)		

• Weight

Printer weight	• 3.05T	Package weight	• 3.9T		
Dryer weight	• 1.2T	Package weight	• 1.9T	Dryer weight (16 Heads)	• 1.5T

K 32

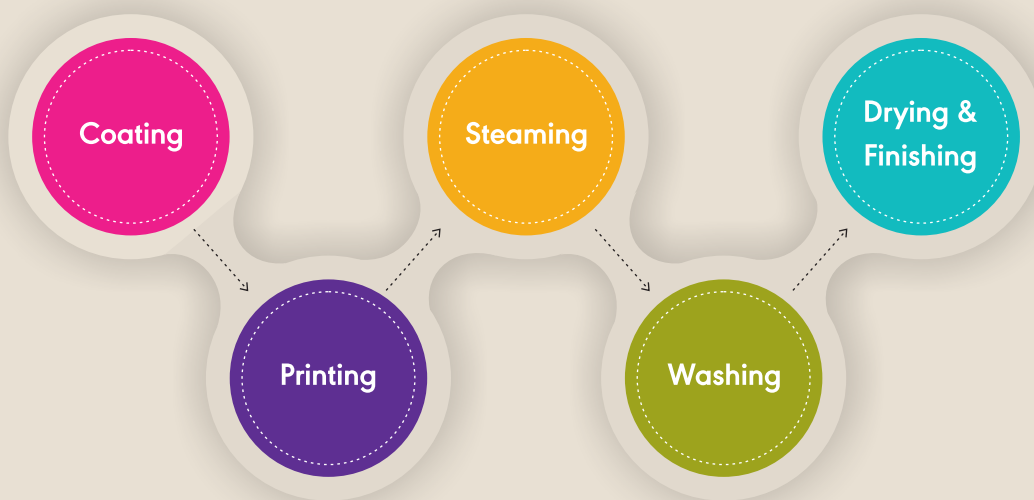
Speed



High-capacity output for industrial production

Self-developed hardware and software systems, combined with high-quality mechanical designs, achieve capacities as high as 550 lm/hr for industrial production.

WORK FLOW





Stable and accurate fabric transfer system

Stable and continuous transfer of substrates during printing is warranted by deviation-free belt movement.



Heatable fabric pressure role

This device works to keep the fabric flat and lower the defect rate. Ideal for smooth and continuous printing



All-around printhead anti-scratch system

The intelligent printhead protection system minimizes the damage of the fabric to the print heads and improves the useful Life.



Intelligent operation interface

The visualized intelligent operation interface realizes one-operator multi-machine management. The orders can be automatically stored, one-button adjusted and retrieved at any time.



Large flow and high-speed degassing device

Continuous printing is assured by in-time removal of air bubbles in the ink.



Large memory industrial server

Industrial server with extra-large memory is capable of high-speed and high-efficiency data transmission and contributes to higher productivity.



Improved belt cleaning and drying system

Efficient and independently controlled belt cleaning and drying system, combined with advanced rubber scraper, sponge roller and air knife, quickly remove water stains from the belt to keep it dry and clean.



Accelerating + Deaccelerating

Helps in Prints Better



Air Blade Washing Unit

Wipe Out Blanket after Washing to remove small droplet of Waters.



Automatic negative pressure system

The negative pressure is finely monitored and adjusted to stay at constant state.



Big Carriage Size

Alignment & Good Working Space

SPECIFICATIONS

Model • K 32

Print head		• Water-based Kyocera print head			
Ink supply system		• Automatic			
Ink tank volume		• 15 L			
Print head Qty		• 32 pcs			
Ink type	Reactive	• cyan,magenta,yellow,black,orange,blue,red,gray			
	Acid	• cyan,magenta,yellow,black,orange,blue,gray,light magenta,fluorescence red,fluorescence yellow			
	Disperse	• Cyan, magenta,yellow,black, blue, orange, fluorescence red, fluorescence yellow			
Color mode		• 4 x 6 colors, 4 x 8 colors			
RIP software		• Caldera, Neostampa, Texprint			
Printing mode	Pass	• 1pass	• 2 pass	• 3pass	• 4pass
	Resolution	• 600 x 600 dpi	• 508 x 1200 dpi	• 508 x 1800 dpi	• 508 x 2400 dpi
	Capacity	• 570 lm/hr	• 375 lm/hr	• 265 lm/hr	• 200 lm/hr
Media information		• Max printing width: 1900 mm • Max media width: 1920 mm • Material weight: 30-450 g/m ² • Max roll weight:100 Kg			
Max roll diameter		• Standard: φ500 mm Jumbo roller: φ1600 mm (optional)			
Media type		• Cotton, linen, silk, nylon, polyester, blended, elastic fabric, etc			
Media conveying		• Continuous belt-conveying, auto constant tension feeding&taking up, fabric spreading, tension-free entry unit			
Drying		• Belt+hot air+IR			
Waste gas treatment		• Heated air circulation, Adjustable exhaust gas forcing system (exhaust gas optional)			
Compressed water supply		• 0.6 Mpa 1 m ³ /hr			
Compressed air supply		• 0.6 Mpa 3.5m ³ /hr (dry, no oil or water)			
Power supply printer		• AC380V ± 10% three-phase five-wire system 42A (23.5 kW) 50Hz/60Hz			
Dryer		• AC380V ± 10% three-phase five-wire system 77A (43 kW) 50hz/60hz			
Power cable requirements		• Printer: 5 x 6mm ² Dryer: 5 x 16mm ²			
Working environment		• Relative humidity: 45%-70% (no condensing) • Temperature20°C~28°C (68°F~77°F)			
Dimension (L/W/H)		• Printer:4400 mm x 6090 mm x 2250 mm • Dryer:5250 mm x 3630 mm x 2900 mm			
Weight		• Printer:7000 Kg • Dryer:3585 kg			
Minimum installation site size (not include jumbo roll)		• 42.65ft x 26.25ft x 10.17ft			



Diaphragm pump ink supply system

Diaphragm pump ink supply system has proven durability and stability, best choice for ink supply.



Excellent noise reduction

High-speed linear motor and THK mute rail are facilitated in X-axis, allowing the carriage to stay stable and smooth printing and the noise is reduced to minimum.

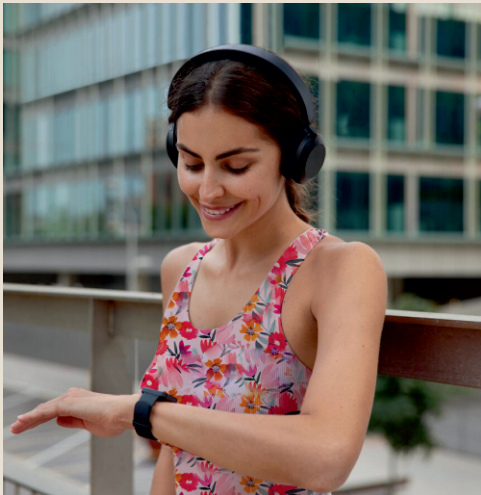


Automatic constant-moisturizing and cleaning system

The design of these systems effectively reduces the wear out of the printheads, extends the useful life and maintains the stable operation of the machines.

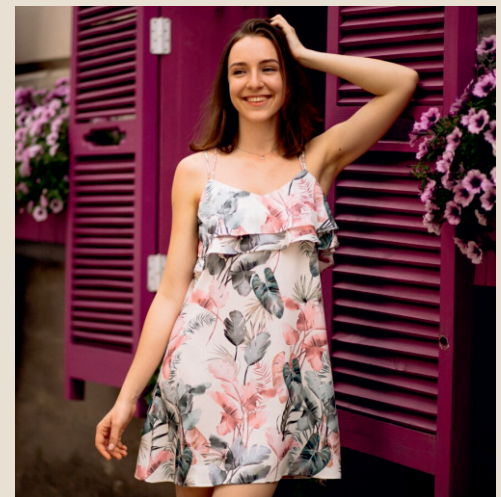
APPLICATIONS

SPORTS WEAR



GARMENTS

HOME FURNISHING



FASHION WEAR

FIGURES THAT DEFINE US



3 CRORE+

LINEAR METER PRINTING
ON OUR MACHINE
EVERY MONTH



500+

INSTALLATION
ACROSS COUNTRY



55+

SERVICE
ENGINEERS

OUR ASSOCIATION

HOMER
Digital Textile Printer

COLORix

MS
PRINTING SOLUTIONS
a DOVER company

twine
The fiber of digital textile

HUNTSMAN

JK
GROUP
a DOVER company

Flotec

inēdit

Boost your textile business
to the next level with the Homer K32 . K24

HOMER
Digital Textile Printer

One call away from printing greatness.
Contact us today and let the Homer K32 and K24 show you the way



Orange O Tec Pvt. Ltd.

Shed No. A2/7111, Street No. 71, Road No. 7, Gate No. 01, Sachin G.I.D.C,
Surat - 394230 (Guj) India.

+91 74900 43336 sales@orangeotec.com www.orangeotec.com

